



Performance Indicators and Goals 2005-2006

Office of Institutional Research
September 2006

Gavilan Performance Indicators and Goals

To help evaluate college performance and focus the planning and instructional efforts of Gavilan, several key variables have been selected as indicators of the college's academic accomplishments. These variables are:

1. Course Success Rates

- Percent of enrollments earning a C or better

2. Course Retention Rates

- Percent of enrollments not resulting in a withdrawal

3. Persistence Rates

- Percent of Fall non-JPA enrollees attending the following Spring

4. Award Rates

- Actual number of awards
- Proportion of awards conferred by Gavilan students out of all California Community College awards

5. Transfer Rates

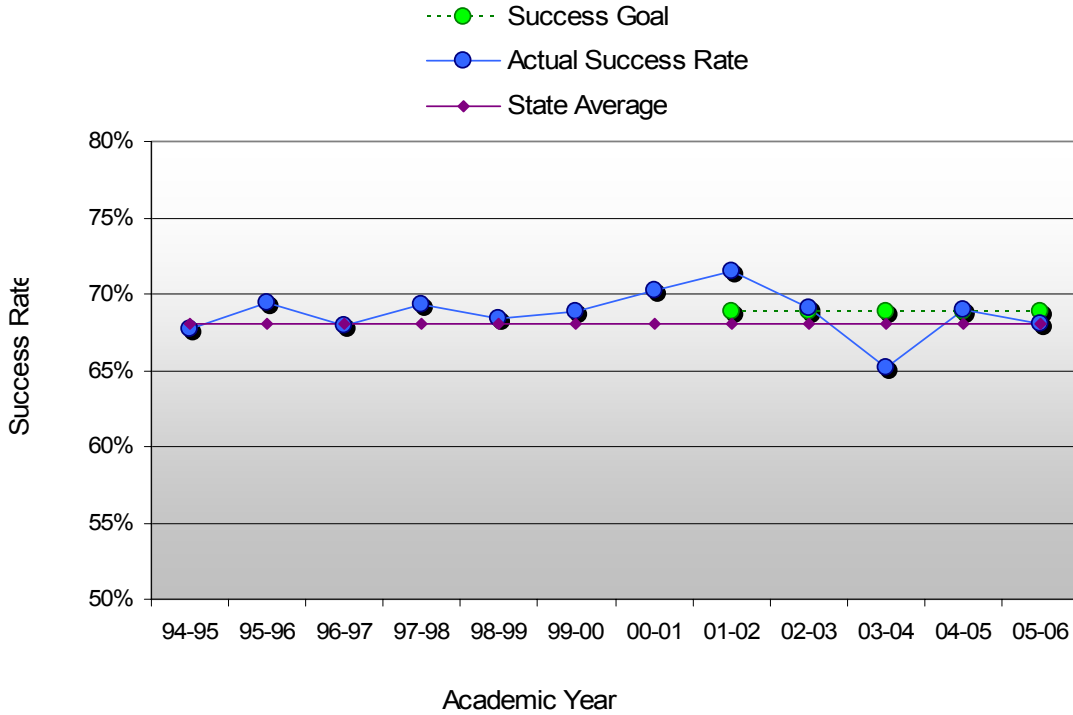
- Actual number of UC and CSU transfers
- Proportion of transfer intent students who are transfer ready or transfer prepared
- Proportion of Gavilan student transfers out of all California Community College transfers to UC and CSU

6. Population Participation Rates

- Proportion of enrollees out of local population by city
- Comparative ethnic proportions of Gavilan students and local residents

Success, Retention, and Persistence

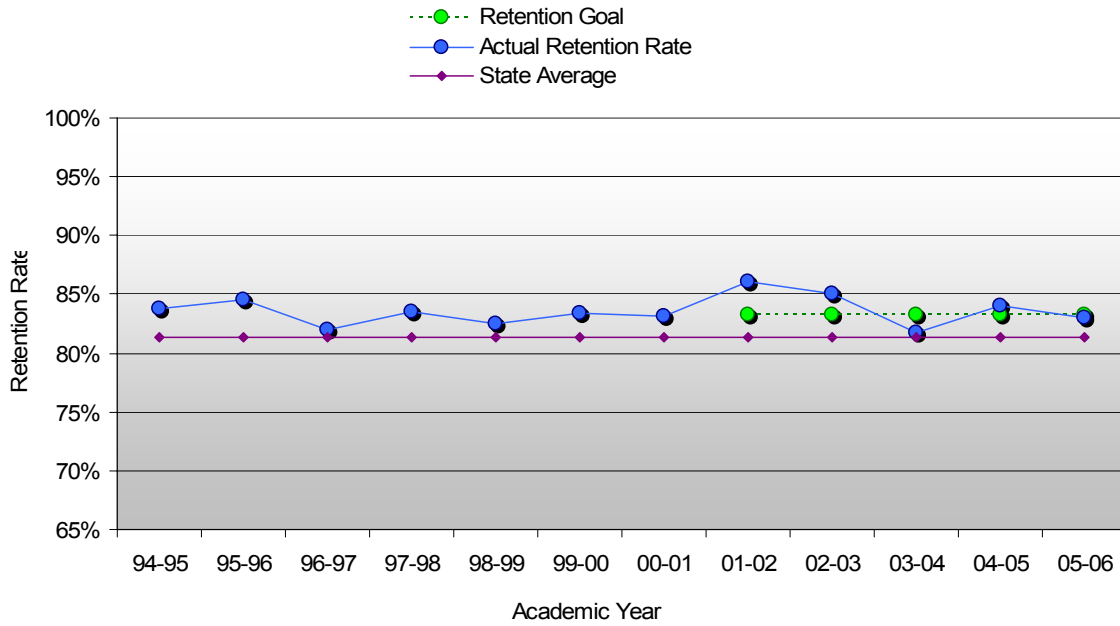
Success Rates for Gavilan College



Goal: Maintain historical average.

| Academic Year | Success Rate |
|---------------|--------------|
| 94-95 | 68% |
| 95-96 | 69% |
| 96-97 | 68% |
| 97-98 | 69% |
| 98-99 | 68% |
| 99-00 | 69% |
| 00-01 | 70% |
| 01-02 | 71% |
| 02-03 | 69% |
| 03-04 | 65% |
| 04-05 | 69% |
| 05-06 | 68% |

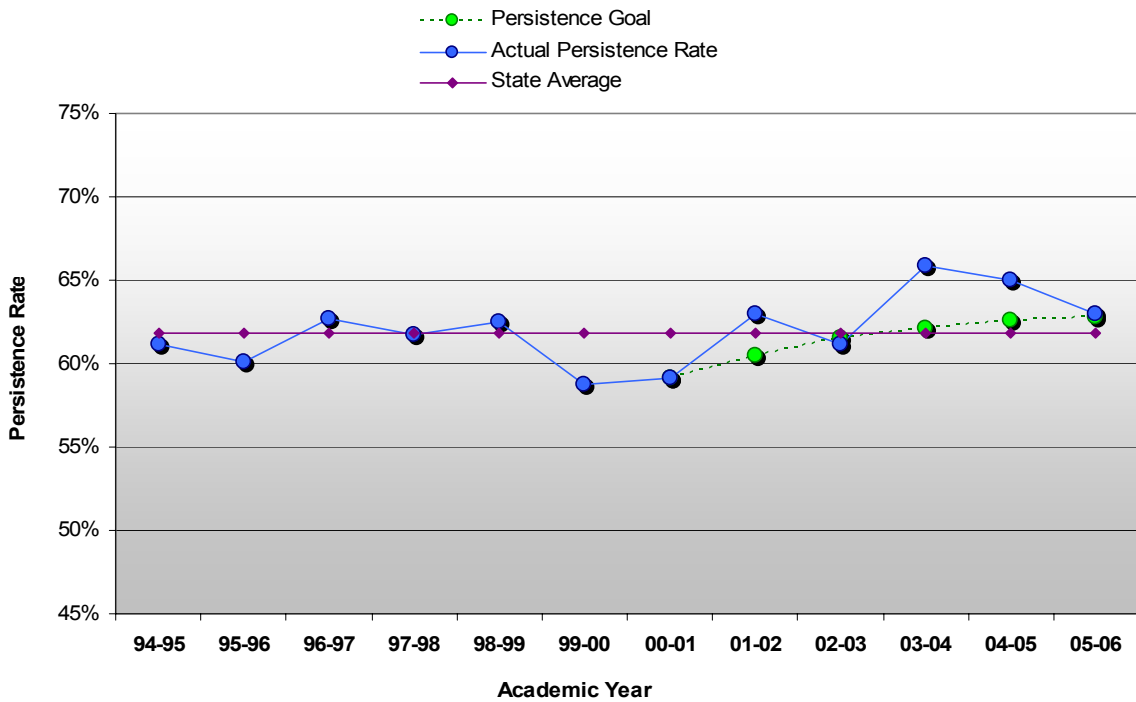
Retention Rates for Gavilan College



Goal: Maintain historical average.

| Academic Year | Retention Rate |
|---------------|----------------|
| 94-95 | 84% |
| 95-96 | 85% |
| 96-97 | 82% |
| 97-98 | 84% |
| 98-99 | 82% |
| 99-00 | 83% |
| 00-01 | 83% |
| 01-02 | 86% |
| 02-03 | 85% |
| 03-04 | 82% |
| 04-05 | 84% |
| 05-06 | 83% |

Persistence Rates for Gavilan College



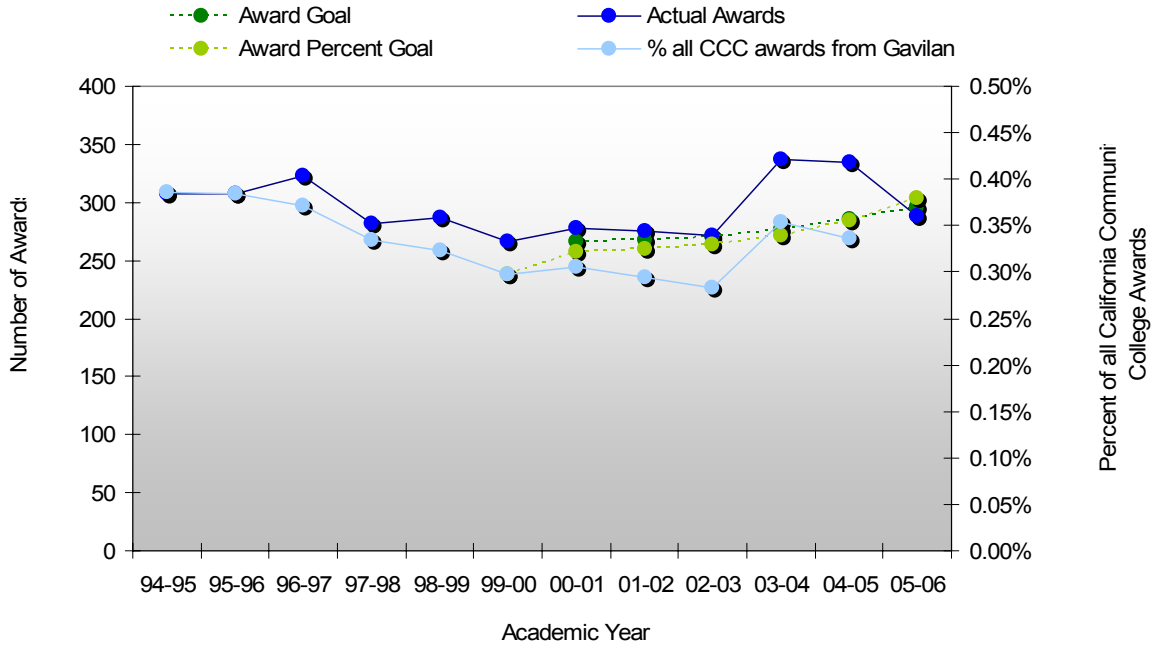
Goal: Meet and exceed the State average by 1 point by the 2006-2007 academic year.

| Academic Year | Persistence Rate |
|---------------|------------------|
| 94-95 | 61% |
| 95-96 | 60% |
| 96-97 | 63% |
| 97-98 | 62% |
| 98-99 | 62% |
| 99-00 | 59% |
| 00-01 | 59% |
| 01-02 | 63% |
| 02-03 | 61% |
| 03-04 | 66% |
| 04-05 | 65% |
| 05-06 | 63% |

Data do not include police or fire academy students as they typically complete their educational goals within a single term.

Awards and Transfers

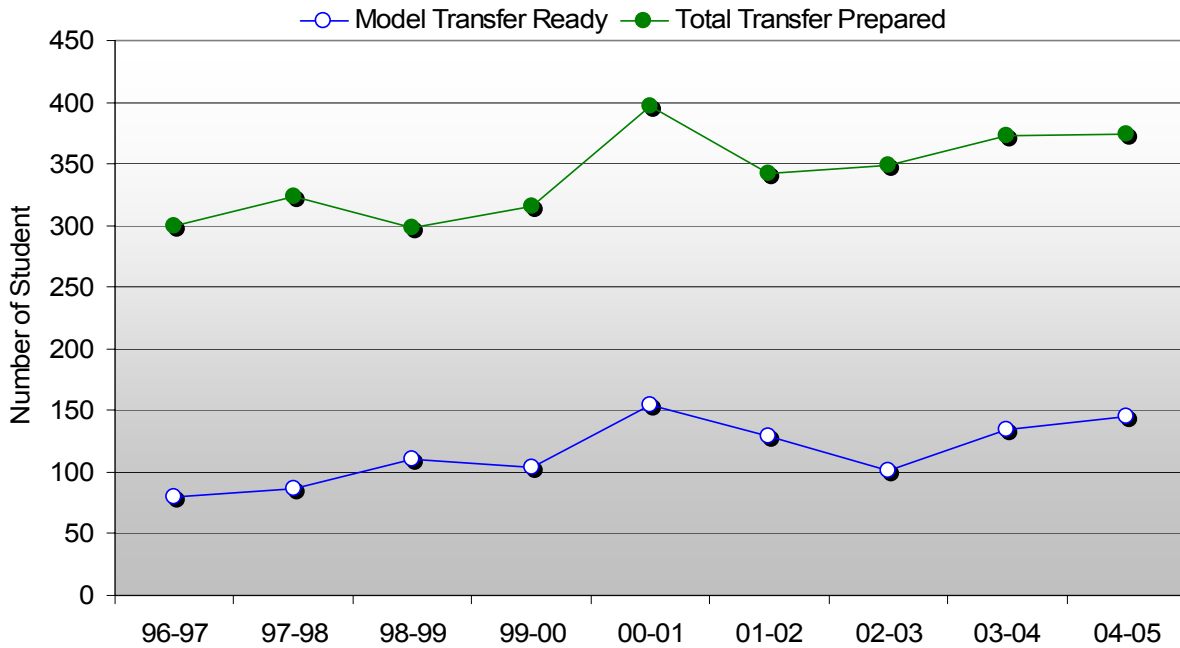
Number of Awards to Gavilan Students and Percentage of Gavilan Awards among all California Community College Awards



Goal: End the decline and return to the 2003-2005 average by 2006-2007 academic year.

| Academic Year | Gavilan Awards | CCC Awards | Percentage of all CCC awards from Gavilan |
|---------------|----------------|---------------|---|
| 94-95 | 307 | 79,402 | 0.39% |
| 95-96 | 308 | 80,094 | 0.38% |
| 96-97 | 323 | 86,813 | 0.37% |
| 97-98 | 282 | 84,179 | 0.34% |
| 98-99 | 287 | 88,978 | 0.32% |
| 99-00 | 266 | 89,598 | 0.30% |
| 00-01 | 278 | 90,994 | 0.31% |
| 01-02 | 275 | 93,478 | 0.29% |
| 02-03 | 272 | 96,372 | 0.28% |
| 03-04 | 337 | 95,217 | 0.35% |
| 04-05 | 334 | 99,449 | 0.34% |
| 05-06 | 288 | Not Available | -- |

Transfer Readiness



Between July 2000 and July 2005, the California Community College Chancellor’s Office reported the status of transfer ready students under the guidelines of the Partnership for Excellence. Starting in academic year 2006-07, reporting of transfer and other college performance indicators will be reported under AB1417, Accountability Reporting for Community Colleges.

Goal: Continue increasing the number of transfer ready students.

| Academic Year | Total Credit Students | Total Transfer Directed | Directed Rate | Model Transfer Ready | Model Ready Rate | Total Transfer Prepared |
|---------------|-----------------------|-------------------------|---------------|----------------------|------------------|-------------------------|
| 96-97 | 6,772 | 302 | 4.46% | 80 | 26.49% | 299 |
| 97-98 | 7,621 | 306 | 4.02% | 86 | 28.10% | 324 |
| 98-99 | 8,485 | 360 | 4.24% | 111 | 30.83% | 298 |
| 99-00 | 8,742 | 329 | 3.76% | 104 | 31.61% | 315 |
| 00-01 | 11,178 | 412 | 3.69% | 155 | 37.62% | 397 |
| 01-02 | 9,720 | 394 | 4.05% | 129 | 32.74% | 342 |
| 02-03 | 9,326 | 336 | 3.60% | 101 | 30.06% | 349 |
| 03-04 | 7,231 | 390 | 5.39% | 134 | 34.36% | 373 |
| 04-05 | 8,309 | 377 | 4.54% | 145 | 38.46% | 374 |

Transfer Directed = Successfully completed transferable Math and English within 6 years.

Directed Rate = proportion of transfer directed within an academic year.

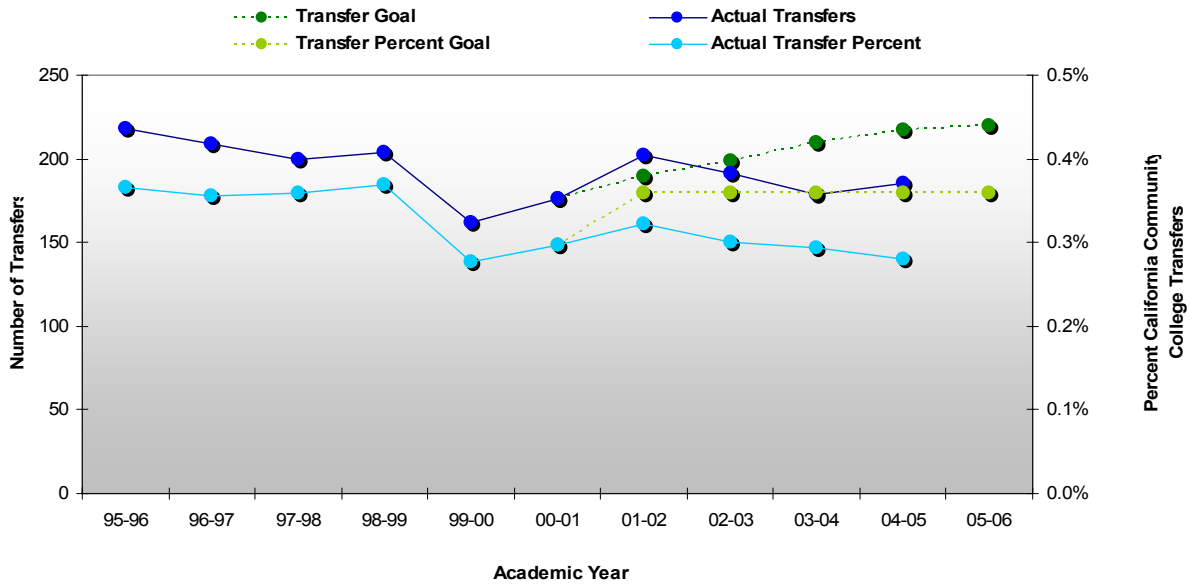
Transfer Ready = A directed student with 56 or more transferable units and a 2.0 GPA.

Model Ready Rate = proportion of transfer directed students who become transfer ready

Transfer Prepared = a student with 56 or more transferable units and a 2.0 GPA

California Community College Chancellor’s Office data include police and fire academy students.

Number of Transfers to UC and CSU by Gavilan Students and Percentage of Gavilan Transfers among all California Community College Transfers

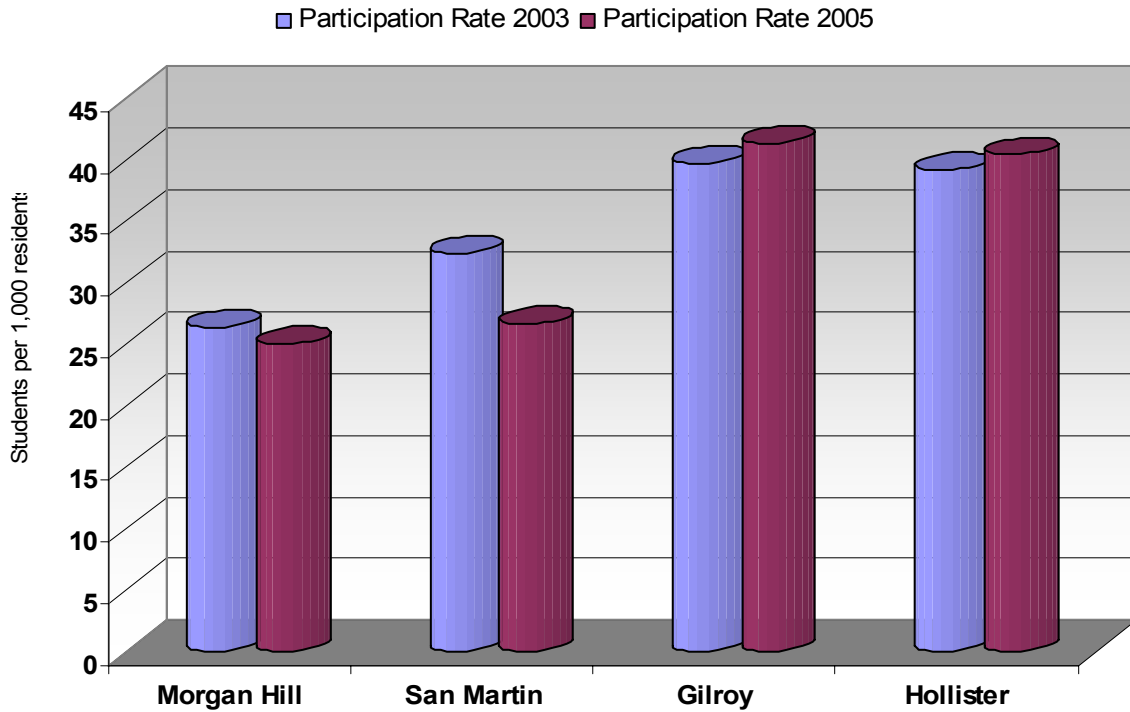


Goal: Continue increasing the number of transfer ready students.

| Academic Year | Gavilan UC and CSU transfers | CCC UC and CSU transfers | Percentage of State transfers from Gavilan |
|----------------------|-------------------------------------|---------------------------------|---|
| 95-96 | 218 | 59,571 | 0.37% |
| 96-97 | 209 | 58,837 | 0.36% |
| 97-98 | 200 | 55,755 | 0.36% |
| 98-99 | 204 | 55,150 | 0.37% |
| 99-00 | 162 | 58,533 | 0.28% |
| 00-01 | 176 | 59,115 | 0.30% |
| 01-02 | 202 | 62,764 | 0.32% |
| 02-03 | 191 | 63,524 | 0.30% |
| 03-04 | 179 | 60,897 | 0.29% |
| 04-05 | 185 | 66,904 | 0.28% |

Participation Rates

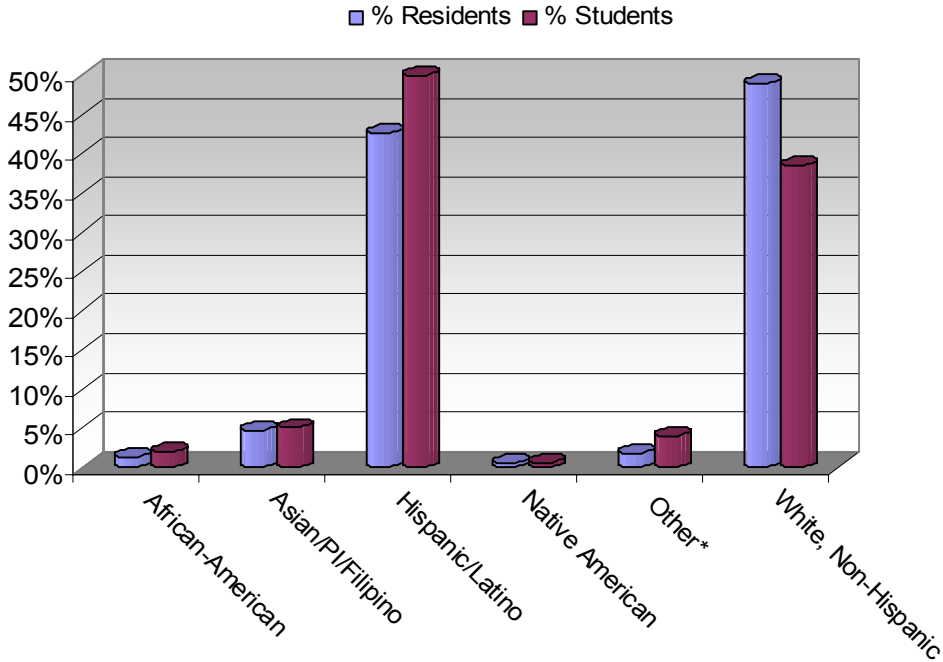
Gavilan Participation Rates by City, 2003-05



Goal: Maintain participation rates for Gilroy and Hollister; increase participation rate for Morgan Hill and San Martin.

| City | 2003 Population Estimate | Fall 2003 Non-JPA Headcount | 2003 Participation Rate | 2005 Population Estimate | Fall 2005 Non-JPA Headcount | 2005 Participation Rate | Participation Rate Change |
|-------------|--------------------------|-----------------------------|-------------------------|--------------------------|-----------------------------|-------------------------|---------------------------|
| Morgan Hill | 34,128 | 902 | 26.4 | 36,279 | 906 | 25.0 | -1.4 |
| San Martin | 4,386 | 142 | 32.4 | 5,936 | 158 | 26.6 | -5.8 |
| Gilroy | 43,817 | 1740 | 39.7 | 47,482 | 1963 | 41.3 | +1.6 |
| Hollister | 36,555 | 1430 | 39.1 | 37,020 | 1495 | 40.4 | +1.3 |

Participation Rates By Ethnicity: Gilroy, Hollister, and Morgan Hill



The ethnic representation between Gavilan and the top three cities in the college service area is very comparable. In 2004-05, some segments of the Gavilan student population slightly overrepresented the adult population in the combined area of Gilroy, Morgan Hill, and Hollister. These data are based on population estimates provided by the U.S. Census and the California State Department of Finance, and should be interpreted conservatively.

Goal: Maintain the ethnic constituency of Gavilan College to represent the surrounding community.

Goal Status: Ethnic proportions of residents over age 18, high school seniors, and Gavilan students within the three main cities were very similar.

| Gilroy, Hollister, Morgan Hill, 2004-05 | | | | |
|--|---------------------------|----------------|------------------|----------------|
| Ethnicity | Residents Age 18 and Over | % Residents | Gavilan Students | % Students |
| African-American | 1,140 | 1.40% | 177 | 1.95% |
| Asian, Pacific Islander, Filipino | 3,888 | 4.77% | 461 | 5.08% |
| Hispanic/Latino | 34,649 | 42.55% | 4,534 | 49.93% |
| Native American | 410 | 0.50% | 56 | 0.62% |
| Other | 1,537 | 1.89% | 367 | 4.04% |
| White, Non-Hispanic | 39,801 | 48.88% | 3,485 | 38.38% |
| Total | 81,426 | 100.00% | 9,080 | 100.00% |